

We are authorised channel partner of Adani Solar

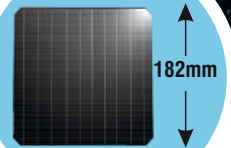
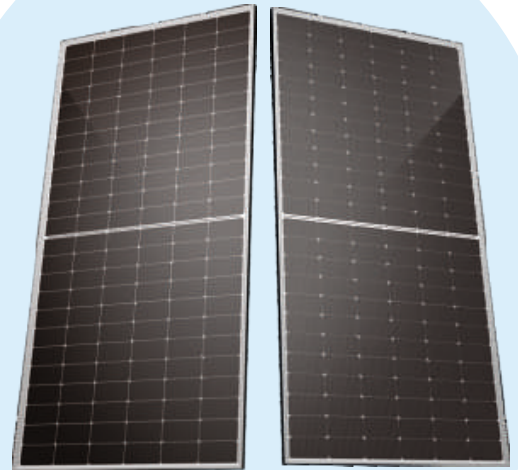
Elan Shine
TOPCon
Modules

570+WP Output
22.28% Efficiency

Elan SHINE TOPCon
570+ Wp

Elan SHINE
535+ Wp

SHINE Series



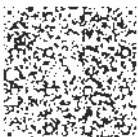
upto 30
years Linear warranty assuring optimal performance

12
years Limited product warranty

expanding to **10**
GW Fully Integrated and Comprehensive Solar Manufacturing Ecosystem

FEATURES:

- G12, M10 Bifacial PERC/TopCon cells
- Half Cut, Multi Bus Bar Technology
- Ga/B doped Wafer Technology
- Module Efficiency upto 23.4%
- Excellent PID Resistance
- Linear Power Degradation as low as 0.40%
- Bifaciality Factor upto 80%
- Upto 30 Years Warranty



Grace Renewable Energy Pvt. Ltd.

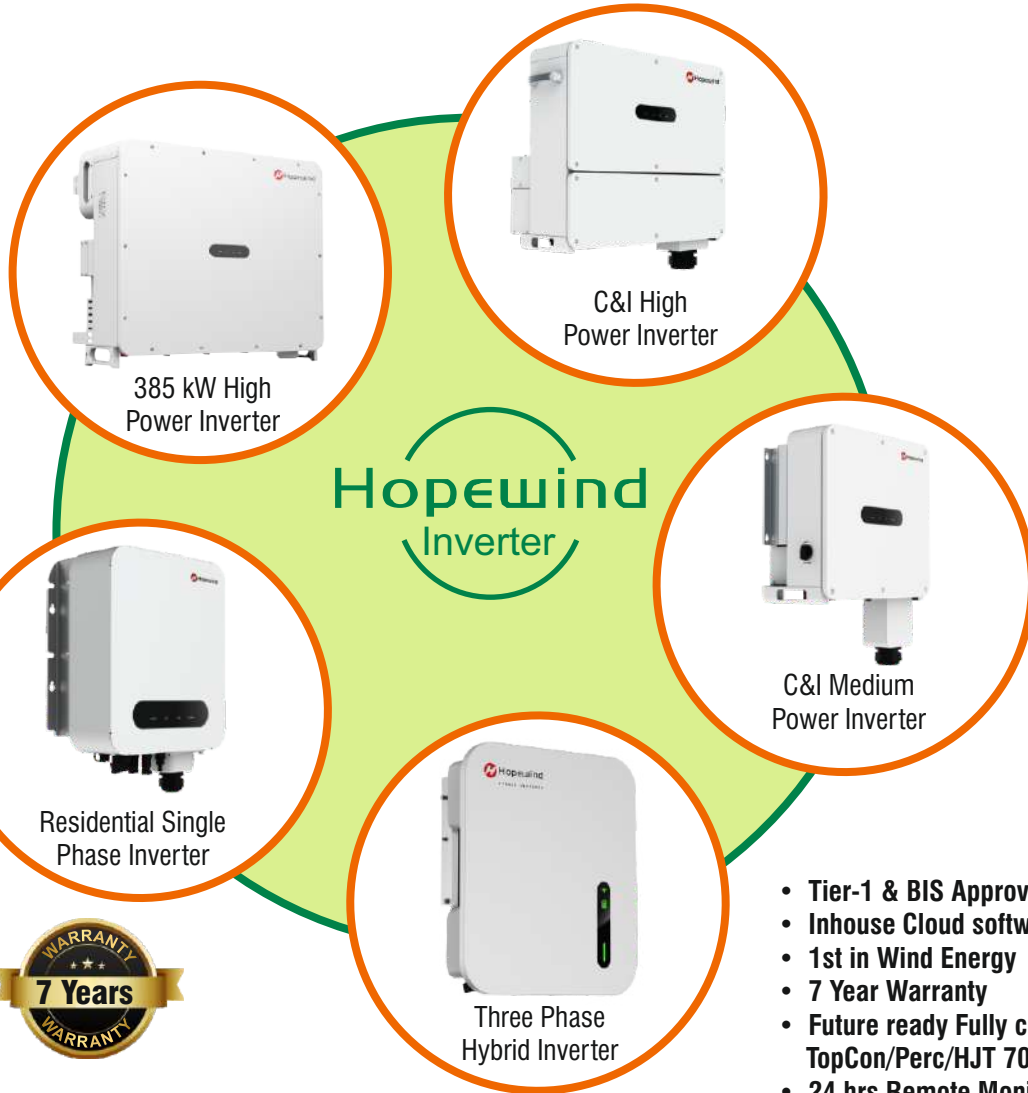
INDIA • CHINA • USA

10th Floor, The Chambers, Nr. TGB Hotel, S.G. Highway, Ahmedabad-380 054.



+91-98250 13358, +91-90994 62222 ✉ info@gracerenew.com 🌐 www.gracerenew.com

We are authorised channel partner of Shenzhen Hopewind Electric Co. Ltd.



FEATURES:



Efficient

- Max. efficiency 99.01%
- Up to 20A PV input current supports 210mm & bifacial PV modules
- Highly-precise intelligent gring detection



Reliable

- Built-in SPD modules
- Built-in PID recovery function
- Compatible in harsh environmental conditions
- Faulty strings automatic disconnection function



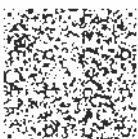
Convenient O&M

- Active and reactive power regulations
- Compatible with weak grid situation
- 24/7 continuously monitoring
- Remote firmware upgrade



Economy Friendly

- AC-side Aluminium cable compatibility
- PLC communication
- Night SVG function



Grace Renewable Energy Pvt. Ltd.

INDIA • CHINA • USA

10th Floor, The Chambers, Nr. TGB Hotel, S.G. Highway, Ahmedabad-380 054.

+91-98250 13358, +91-90994 62222 ✉ info@gracerenew.com 🌐 www.gracerenew.com